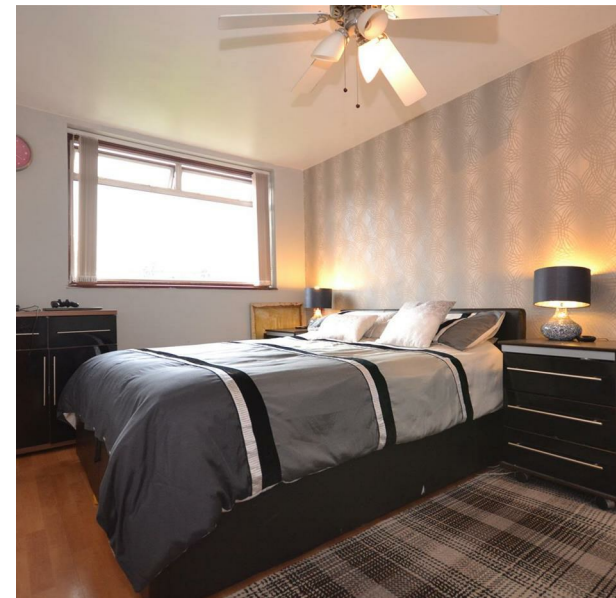


1 Sylvester Road, London, Greater London, E17 8ED
£600,000

COMPLETION
SALES & LETTINGS



1 Sylvester Road, London, Greater London, E17 8ED

£600,000

Council Tax Band: C

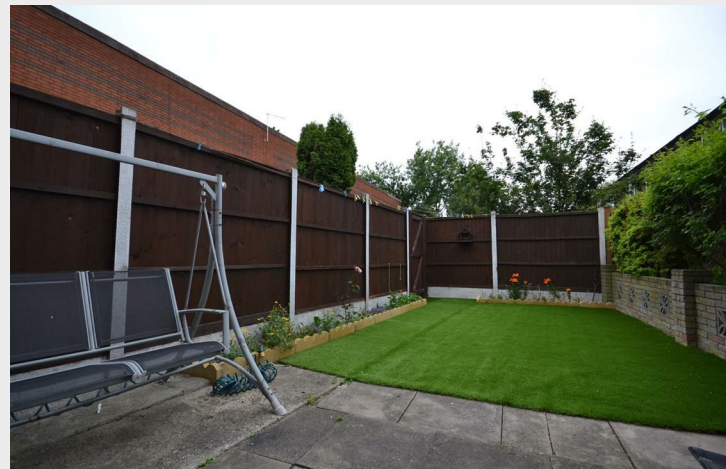
IDEAL FOR FAMILIES | OFF STREET PARKING | GARAGE | THREE DOUBLE BEDROOMS | TWO BATHROOMS | GUESTS W.C

Looking for a spacious family home with off street parking and garage? Then look no further. This beautiful and well-designed three/four bedroom home is an ideal buy for a family.

The layout comprises of a separate kitchen, separate living room with patio doors leading to a large private rear garden. First floor comprises of master bedroom, a spacious double bedroom, a further single bedroom and a first floor family bathroom. The second floor has been converted and accommodates bedroom and a shower room.

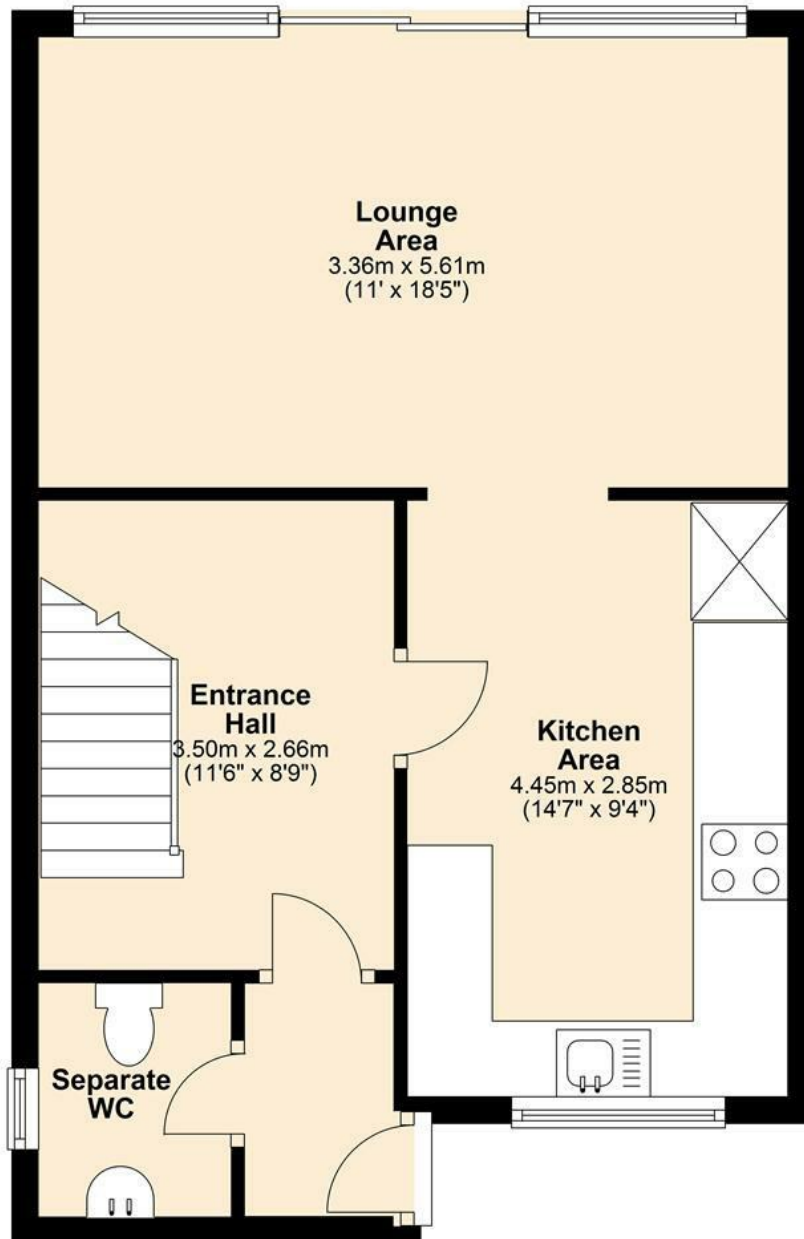








Ground Floor
 Approx. 45.3 sq. metres (487.9 sq. feet)



337 Forest Road
 London
 E17 5JR
 02085277007
 enquiries@completion.co.uk
 completion.co.uk

Energy Efficiency Rating		Current	Potential
Very energy efficient - lower running costs			
(92 plus) A			
(81-91) B			86
(69-80) C			
(55-68) D		65	
(39-54) E			
(21-38) F			
(1-20) G			
Not energy efficient - higher running costs			
England & Wales		EU Directive 2002/91/EC	